

Technical Data Sheet

Product Code:

MCQLL

Product Description:

Large quick lock for trays from 300mm to 600mm wide

Product Dimensions:

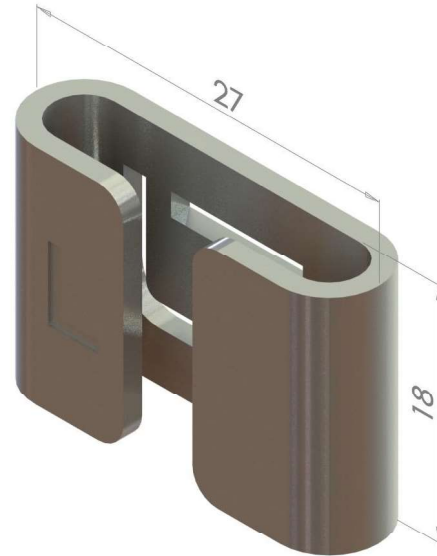
27 x 18 x 1.50mm

Utilisation:

Creating large radius bends
Built in locking tab used with flat-head screw driver

Applicable Standards:

BS EN 61537 (Cable tray systems)
BS EN ISO 2081 (Metallic and other inorganic coatings)



Product Specification:

Manufactured: Power pressed from stripped steel.

Material Specification:(if applicable)

MS 1.5mm Q235

C	Si	Mn	P	S
0.17%	0.14%	0.24%	0.001%	0.002%

Yield Strength	355 MPa
Tensile Strength	459 MPa
Elongation	40%

The above are typical test results and do not constitute any part of a specification

Finishes:

MCQLL - Electro Zinc (EZ), suitable for use with EZ cable trays